

EKATEC

Euro S bends 90°
(one-piece, without rib)
for welded, pressed or
screwed insulated fittings.
Euro W bends 90°
for short radius water-pipe
elbows.

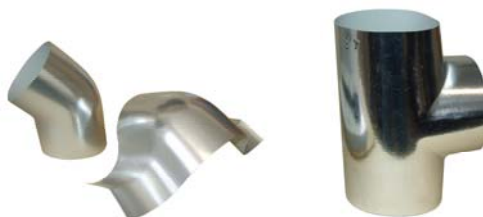


EKATEC

one-piece bends (type Scan)
plain open shape, as norm 3
(S) and short radius W-bend;
for welded, pressed or screwed
insulated elbows.

EKATEC
45° bends

in open or closed shape, to
cover 45° pipe fittings.



EKATEC

one-piece tees
for all common 90° pipe
branches.

EKATEC
tee valve covers

removable, for valves with
straight or diagonal spindle.
(insulation not included)



**EKALIT insulaion ends on
rolls,**
of Isogenotec® material

EKATEC
end caps

for small vessels and ends of
distributors.



EKATEC

internal coverings
for insulated vessels.

EKAFIX
tape



EKAFIX accessories

fastenings, adhesives, tapes,
cutting devices and special
working tools for EKATEC