

# Type E Roof Ejector

## WDQ-E



### Description

The type E roof ejector is used in exhaust air systems as a ventilation duct end cap.

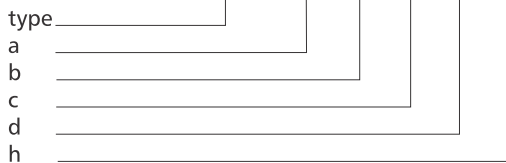
It has an internal water chute.

The flange is made from an end cover with P30 sheet metal joining profiles.

Inside there is a drip tray with rainwater chute. The ejector top is protected with mesh.

#### Example identification

Product code: **WDQ-E 300 300 700 340 720**



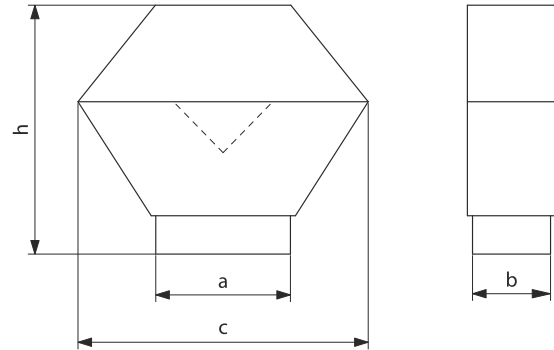
Labelling example for standard dimensions:

**WDQ-E-a-b** **WDQ-E-300-300**

Medium pressure design:

**WDQ-E-a-b-S** **WDQ-E-300-300-S**

### Dimensions



<i>a x b</i>	<i>c</i>	<i>h</i>
250 x 250	600	660
300 x 300	700	720
400 x 400	900	890
500 x 500	1100	1060
600 x 600	1300	1200
800 x 800	1700	1540
1000 x 1000	2100	1880
1200 x 1200	2500	2220