

Plenum boxes for grilles

FLX-PLO-MOV



Description

The FLX-MOV plenum box is used for mounting supply-exhaust grilles in the residential ventilation system with heat recovery unit. The plenum box has on the one end male duct connection spigot for FLX-HDPE ducts, and on the other end it has a slot adapted to SHR grilles.

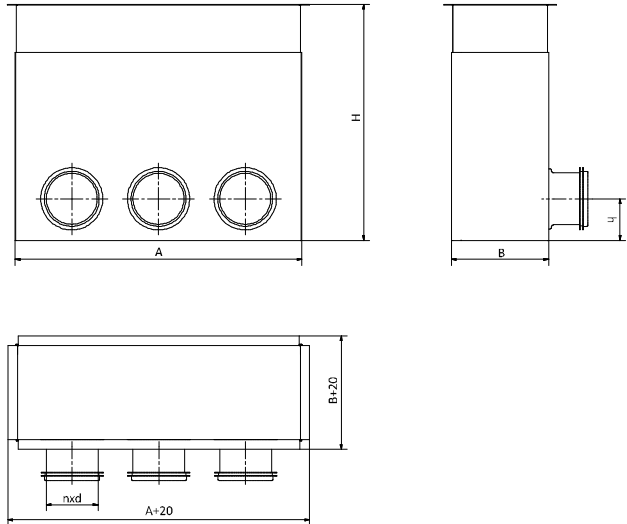
In addition, the height (length) of the plenum box is adjustable in the range of 200-310, which allows you to match the plenum box size to the partition thickness.

Product code example

Product code **FLX-PLO-MOV - 75 - 2**

type _____
 diameter _____
 number of spigots _____

Dimensions



Product code	SHR	A [mm]	B [mm]	H [mm]	d [mm]	h [mm]	n [pcs]
FLX-PLO-MOV-75-2	200x100	204	103	200-310	63	44	2
FLX-PLO-MOV-75-3	300x100	304	103	200-310	63	44	3

How to install

