

Silencer for heat recovery ventilation system

FLX-SQOL



Description

The FLX-SQOL silencer was designed as an attenuating element that is mounted before the FLX-PLO / FLX-PRO plenum box. It has either 1 or 2 spigots (just like the number of FLX-PLO / FLX-PRO plenum boxes spigots), the silencer is connected using FLX-HDPE ducting. In the case of 3-spigot FLX-PLO plenum boxes, it's recommended to use a combination of two silencers - $2n + 1n$. The FLX-SQOL silencer are insulated with an attenuating material - non-combustible stone wool.

Product code example

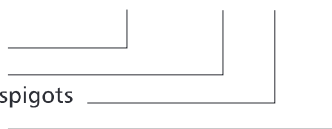
Product code: **FLX-SQOL - 75 - 1 - 300**

type

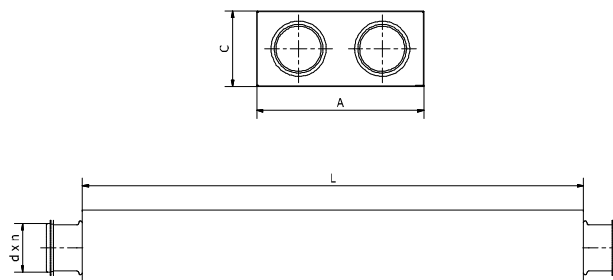
diameter

number of spigots

length



Dimensions



Product code	A [mm]	C [mm]	L [mm]	d [mm]	No of spigots n [pcs.]
FLX-SQOL-75-1-300	120	90	300	63	1
FLX-SQOL-75-1-600	120	90	600	63	1
FLX-SQOL-75-1-900	120	90	900	63	1
FLX-SQOL-75-2-300	200	90	300	63	2
FLX-SQOL-75-2-600	200	90	600	63	2
FLX-SQOL-75-2-900	200	90	900	63	2
FLX-SQOL-90-1-300	120	110	300	75	1
FLX-SQOL-90-1-600	120	110	600	75	1
FLX-SQOL-90-1-900	120	110	900	75	1
FLX-SQOL-90-2-300	240	110	300	75	2
FLX-SQOL-90-2-600	240	110	600	75	2
FLX-SQOL-90-2-900	240	110	900	75	2